

CAL 6000 200 CBC+DIFF: 220 T/H



WxLxH: 1340x1027x728 mm Weight: 350 kg

BC-6000+BC-6000



WxLxH: 1340x1027x728 mm Weight: 350 kg

BC-6200+BC-6200

CAL 6000 111 CBC+DIFF: 110 T/H, SC-120: 120 Slides/H, MC-80: 60 Slides/H



WxLxH: 2303x1027x728 mm Weight: 480 kg

BC-6000+SC-120+MC-80



WxLxH: 2303x1027x728 mm Weight: 480 kg

BC-6200+SC-120+MC-80

CAL 6000 211 CBC+DIFF: 220 T/H, SC-120: 120 Slides/H, MC-80: 60 Slides/H



WxLxH: 2968x1027x728 mm Weight: 630 kg

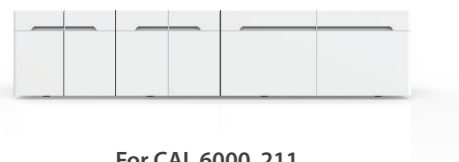
BC-6000+BC-6000+SC-120+MC-80



WxLxH: 2968x1027x728 mm Weight: 630 kg

BC-6200+BC-6200+SC-120+MC-80

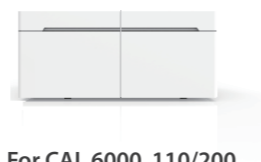
**Workbench (Optional)**



For CAL 6000 211



For CAL 6000 111/210



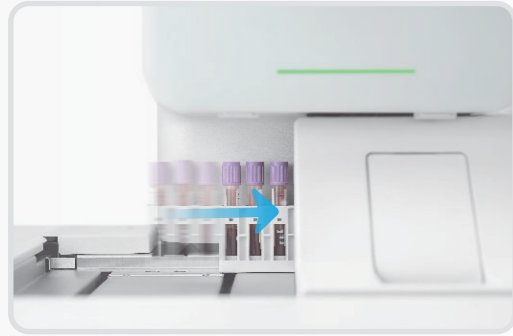
For CAL 6000 110/200

**CAL 6000**  
Bench-top Cellular Analysis Line

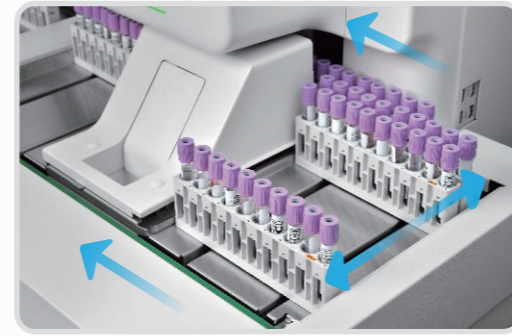
**Hematology automation within reach**







When the sample results trigger the criteria, the autoloader of each hematology analyzer will return the sample racks for automatic rerun or reflex check.



The bidirectional loading track, with patent technology, on the first hematology analyzer enables fast sample distribution, improving efficiency and productivity.

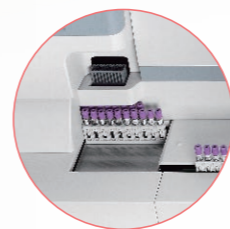
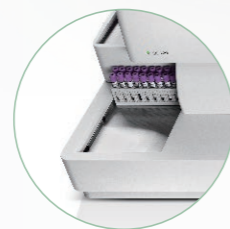


The tube racks could be customized based on different colors to differentiate specific testing modes, such as "CBC", "CD" and "CR" test mode.



**NEW MC-80 Automated Digital Cell Morphology Analyzer**

MC-80 provides ultra resolution images to reappear the real view under the microscope. By using advanced Multi-layer fusion technology, it simulates manual focus adjustment and accurately restores the pathological features of cells, which is helpful for early screening of blood diseases (such as acute promyelocytic leukemia) and infectious diseases.



● ● ● **Unloading platform**

● ● ● **Loading platform**

The CAL 6000 211 is equipped with 3 loading platforms and 3 unloading platforms with large capacities.



**Re-exam: transport the samples that require blood smears, as per the pre-defined re-exam criteria**

The re-exam criteria on CAL 6000 can be defined by many conditions, such as patient age, gender, department, historical result etc. This helps minimize the number of blood smears.



**Repeat: repeat the previous test (in case of some system errors)**

**Rerun: keep the previous test result, and rerun the sample in the same test mode (for suspect results)**

**Reflex: add some test items such as "PLT-O" (in case of suspected results)**

The CAL 6000 can automatically distribute the samples with "Repeat", "Rerun" and "Reflex" criteria which are pre-defined by users.





## STAT-Single sample



STAT sample could load ahead that reduce the TAT of emergency. By utilizing the patent adapter, many types of tubes are allowed.



## STAT-Batch samples

The batch samples could be loaded before any of the waiting racks.

## Load or unload samples freely

Users could load samples in any of the loading areas and pick up samples from any of uploading area anytime.





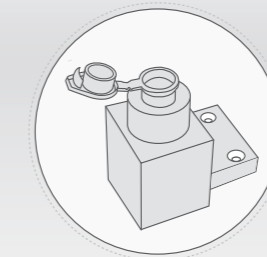
## 1, 2, 3 Load & Go

Just by following 3 simple steps of “load and go”, operators of SC-120 Slide Maker & Stainer are able to obtain finished slides which are ready for microscopic analysis. Up to 150 blank slides and 10 cassettes holding 10 slides each can be loaded at a time.

1 Load slides

2 Load cassettes

3 Go finished slides



The SC-120 can make smears from capillary samples as minimum samples required is only 25ul.

## Availability of various tubes on autoloader mode

To cater to customer’s diversified needs, different types of blood collection tubes can be used on CAL 6000, including regular whole blood vacuum tube, capillary blood microtainer tube and Sarstedt tube.



### — Switch Online & Offline

The SC-120 can also be used as a stand-alone unit by switching to “Offline” mode. Users can make slides by specific tube rack or manual sampling position.





## Capture comprehensive pathological features of each cell

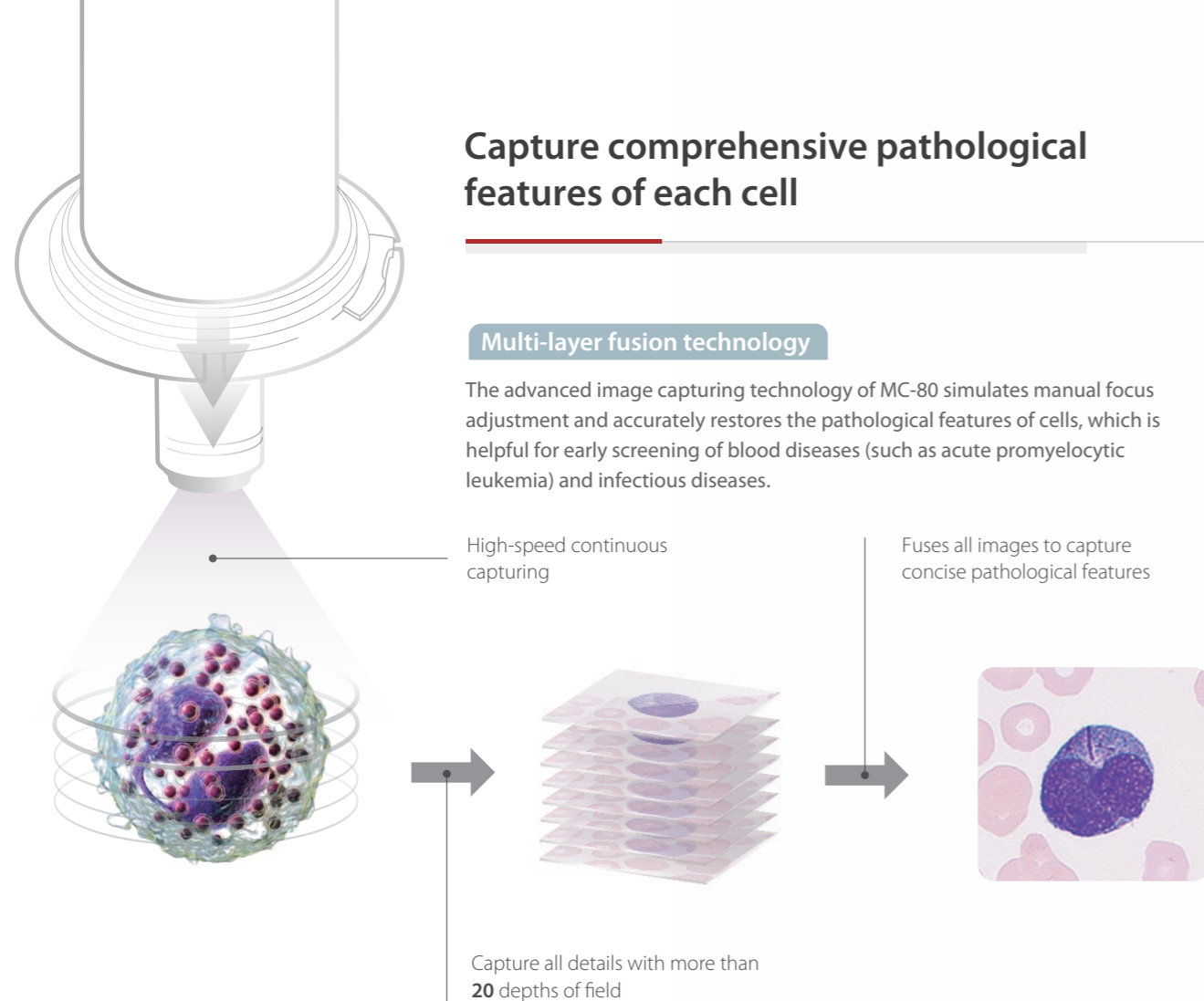
### Multi-layer fusion technology

The advanced image capturing technology of MC-80 simulates manual focus adjustment and accurately restores the pathological features of cells, which is helpful for early screening of blood diseases (such as acute promyelocytic leukemia) and infectious diseases.

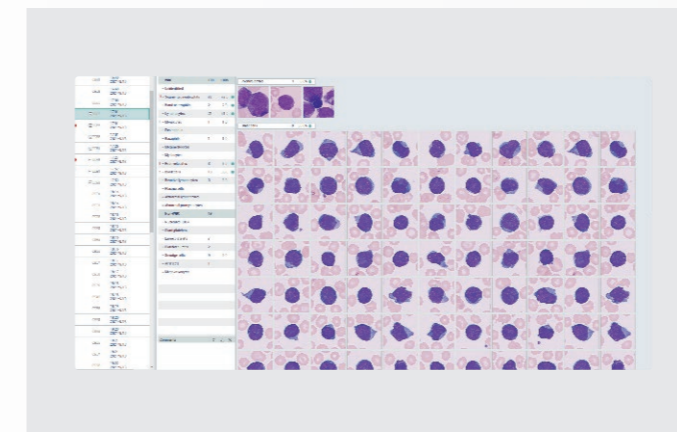
High-speed continuous capturing

Fuses all images to capture concise pathological features

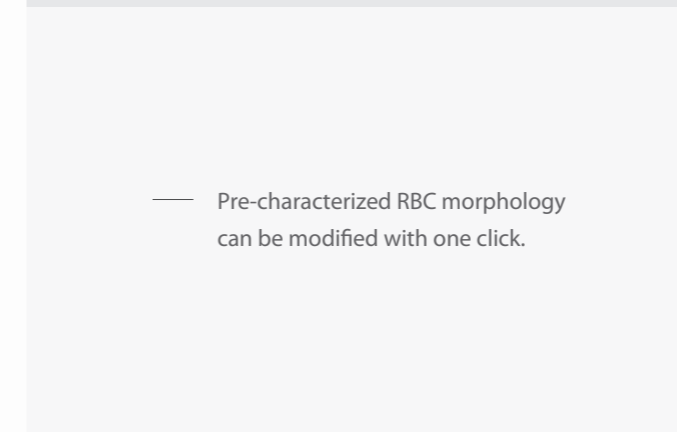
Capture all details with more than 20 depths of field



## Reliable cell pre-classification and pre-characterization



— Accurately pre-classifies white blood cells, especially abnormal cells, such as blast cells, reactive lymphocytes, etc.



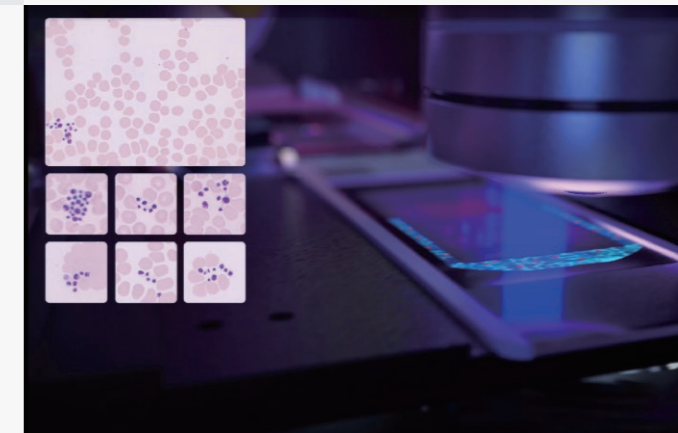
— Pre-characterized RBC morphology can be modified with one click.



— PLT counting assistance



High-speed FLY-MODE ensures the accurate **PLT clump identification**



**60 Slides/hour**  
Industry-leading high throughput

**SOLID ROCK** Hyper-stable anti-shake system: Aerospace materials and cutting-edge high-frequency exposure algorithm are integrated to eliminate blurred images.

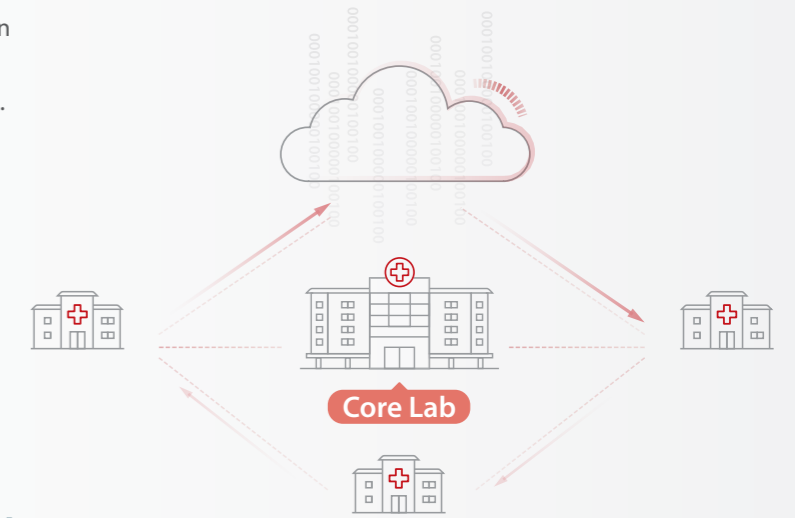


# New working procedure help you enhance the efficiency

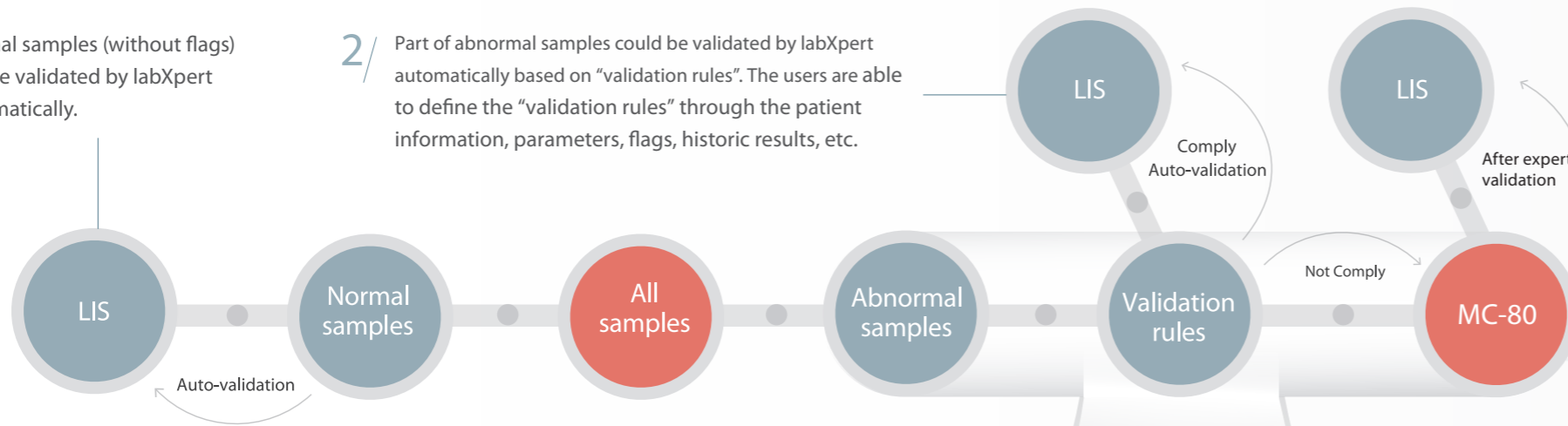
1/ Normal samples (without flags) can be validated by labXpert automatically.

2/ Part of abnormal samples could be validated by labXpert automatically based on "validation rules". The users are able to define the "validation rules" through the patient information, parameters, flags, historic results, etc.

3/ All necessary information on one screen ensures easier manual validation.

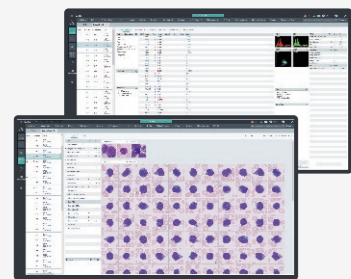


4/ Remote review and consultation in multiple locations

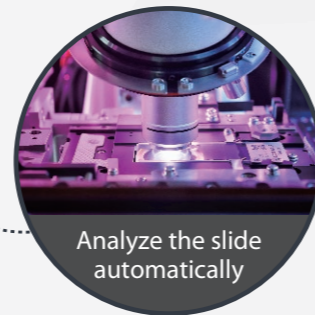


## The labXpert software optimizes following functions to simplify your workflow for data analysis:

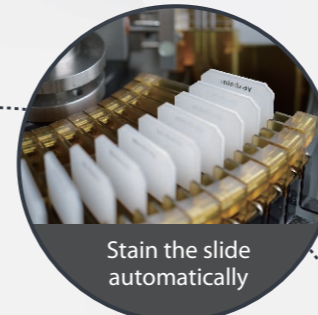
- Improved re-exam criteria function with multi-conditions setup
- Auto-validation for normal samples
- More intuitive interface to review and validate pathological samples



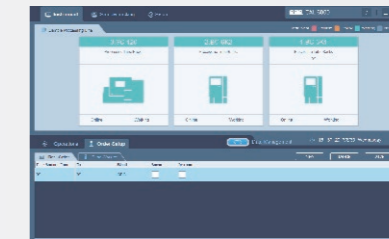
Remote consultations



Analyze the slide automatically



Stain the slide automatically



### CMU

CMU optimizes the distribution of workload between each BC-6000/6200 unit and decides which sample requires a blood smear. It displays the status of each instrument on CAL 6000 as well as the volume of balance reagent.

