

# MC-80

Automated Digital Cell Morphology Analyzer  
**Technical Specifications**

### Analysis mode

Peripheral Blood ( WBC, RBC+PLT, PLT-Pro), Body Fluid ( WBC, Overview 10X, Overview 10X+100X ), Digital Slide.

Different combinations of analysis mode could be triggered according to the results of hematology analyzer.

### Throughput

Peripheral blood: up to 60 Slides/hour (100WBC+RBC+PLT)  
 Body fluid: minimum 15 sliders/hour(100WBC+ Overview 10X)

*\* Values provided are approximate due to WBC concentration, number of non-WBCs and quality of the smear.*

### Oiling Method

Automatic oil dripping

### Slide Storage Capacity

Up to 60 completed slides at the same time

### Quality Control

Cell location accuracy test for the verification of the hardware and stain quality

### Communication

Bi-directional LIS  
 Ethernet 10/100/1000 Mbps

### Supported Printers

Laser/inkjet printers supported by Windows

### System Components

labXpert software  
 Computer with operating system of Windows 10 or above

### Data Storage Capacity

Up to 80,000 samples  
 Support data and cell Images archiving of peripheral blood and body fluid slides

### Operating Environment

Ambient temperature: 15°C~32°C  
 Relative humidity: 30%~85%  
 Atmospheric pressure: 70.0kPa ~ 106.0kPa (Altitude height: -400 m to +3000 m)

### Power Supply

Voltage: 100 V~240 V (allowable deviation:±10%)  
 Frequency: 50Hz/60Hz (allowable deviation: ±2Hz)  
 Power: 300VA

### Dimensions and Weight

Analyzer dimensions  
 Width×Depth×Height ≤ 600mm×570mm× 700mm  
 Analyzer weight ≤100 kg

# MC-80

Automated Digital Cell Morphology Analyzer

## More Clarity. More Intelligence. More Productivity.



### Diverse configurations to meet all kinds of demands

CAL 6000



Width×Depth×Height : 2970×1030× 810 (mm)

CAL 8000



Width×Depth×Height : 5360×1030× 1470 (mm)



# MC-80

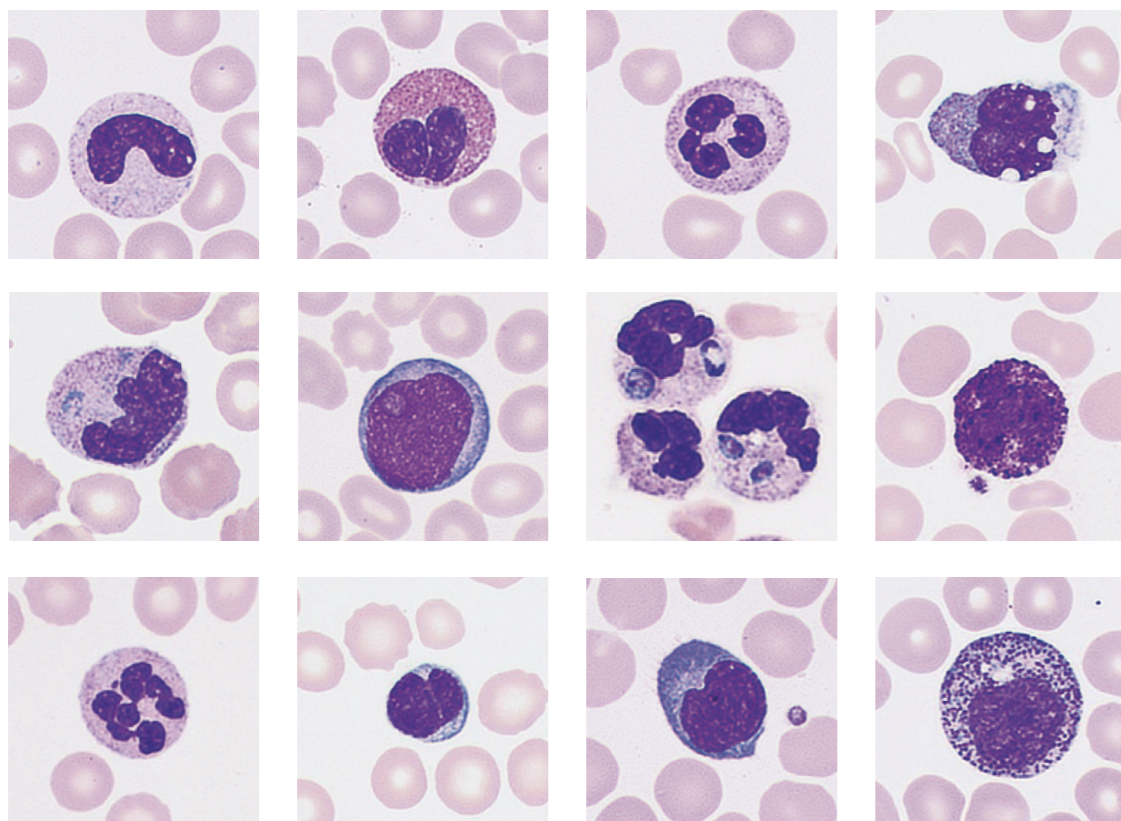
Automated Digital Cell Morphology Analyzer

## More Clarity

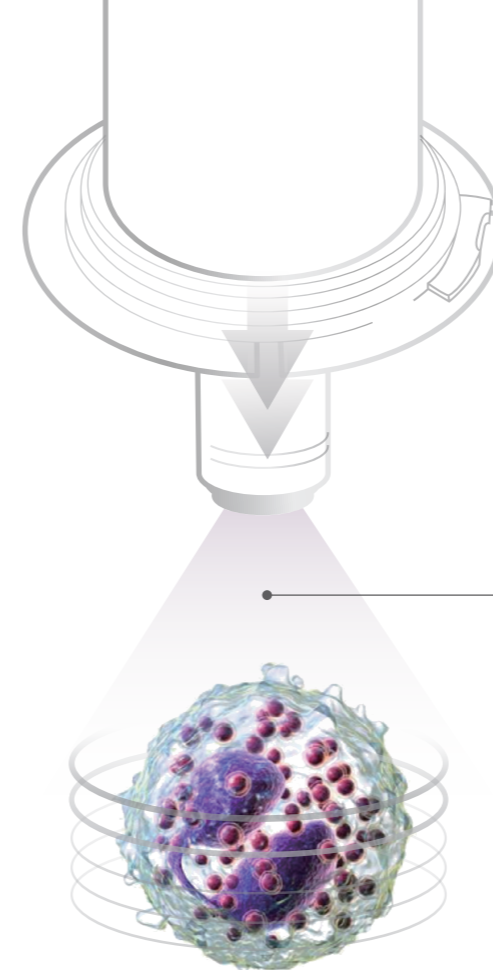
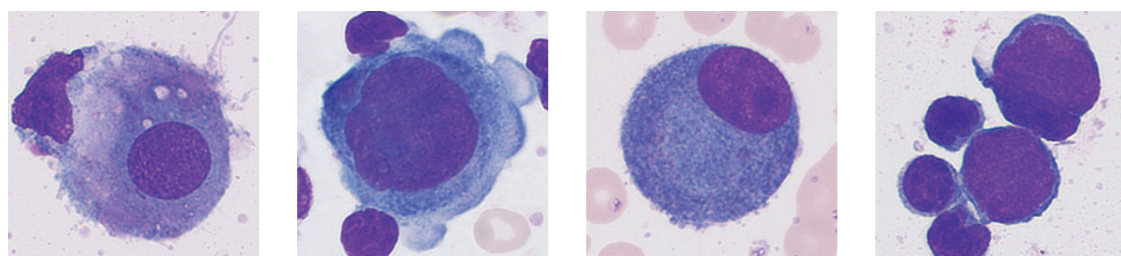
### Display the ultra clarity and authenticity of each cell

The high-performance objective lens and advanced image sensor offer ultra resolution images to reappear the real view under the microscope.

### Peripheral Blood



### Body Fluid



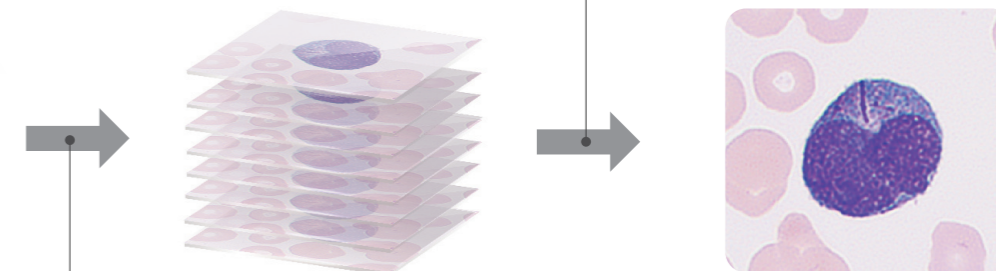
### Capture comprehensive pathological features of each cell

#### Multi-layer fusion technology

Simulates manual focus adjustment and accurately restores the pathological features of cells, which is helpful for early screening of blood diseases (such as acute promyelocytic leukemia) and infectious diseases.

High-speed continuous capturing

Fuses all images to capture concise pathological features



Capture all details with more than 20 depths of field

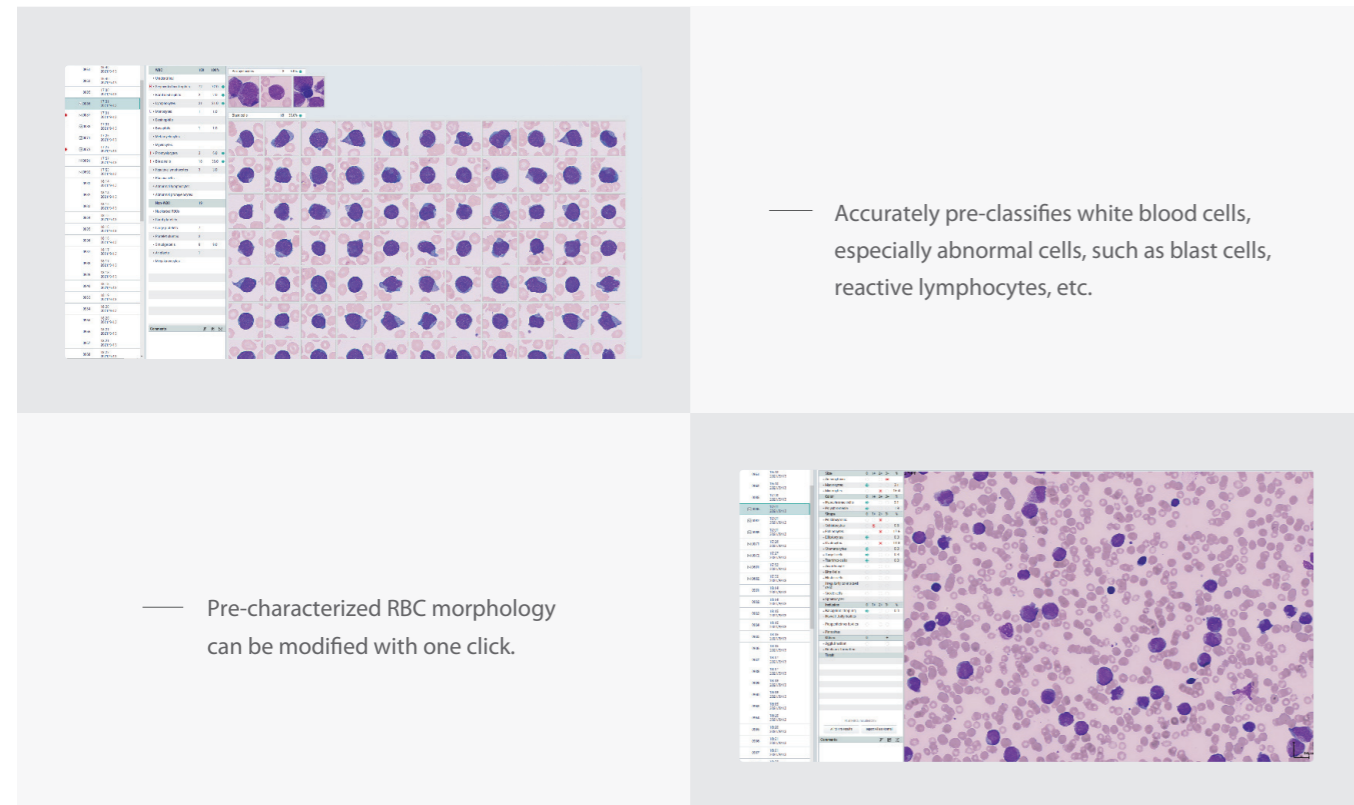
Overview images of the body fluid sample






# More Intelligence

## Reliable cell pre-classification and pre-characterization




— Accurately pre-classifies white blood cells, especially abnormal cells, such as blast cells, reactive lymphocytes, etc.

— Pre-characterized RBC morphology can be modified with one click.

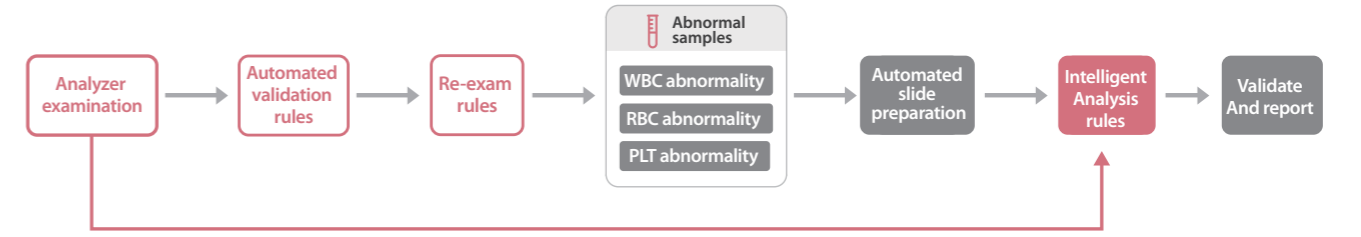


— PLT counting assistance

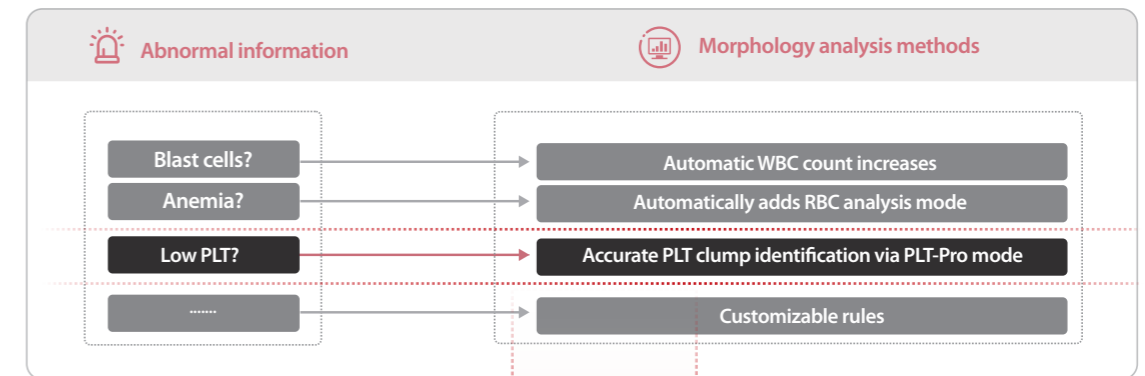


High-speed FLY-MODE ensures the accurate **PLT clump identification**

## Intelligent analysis rules facilitate a smart process and less manual intervention



Automatically react on analysis results, flag messages, scatter plots and etc.



Smarter process and less manual intervention via intelligent analysis rules





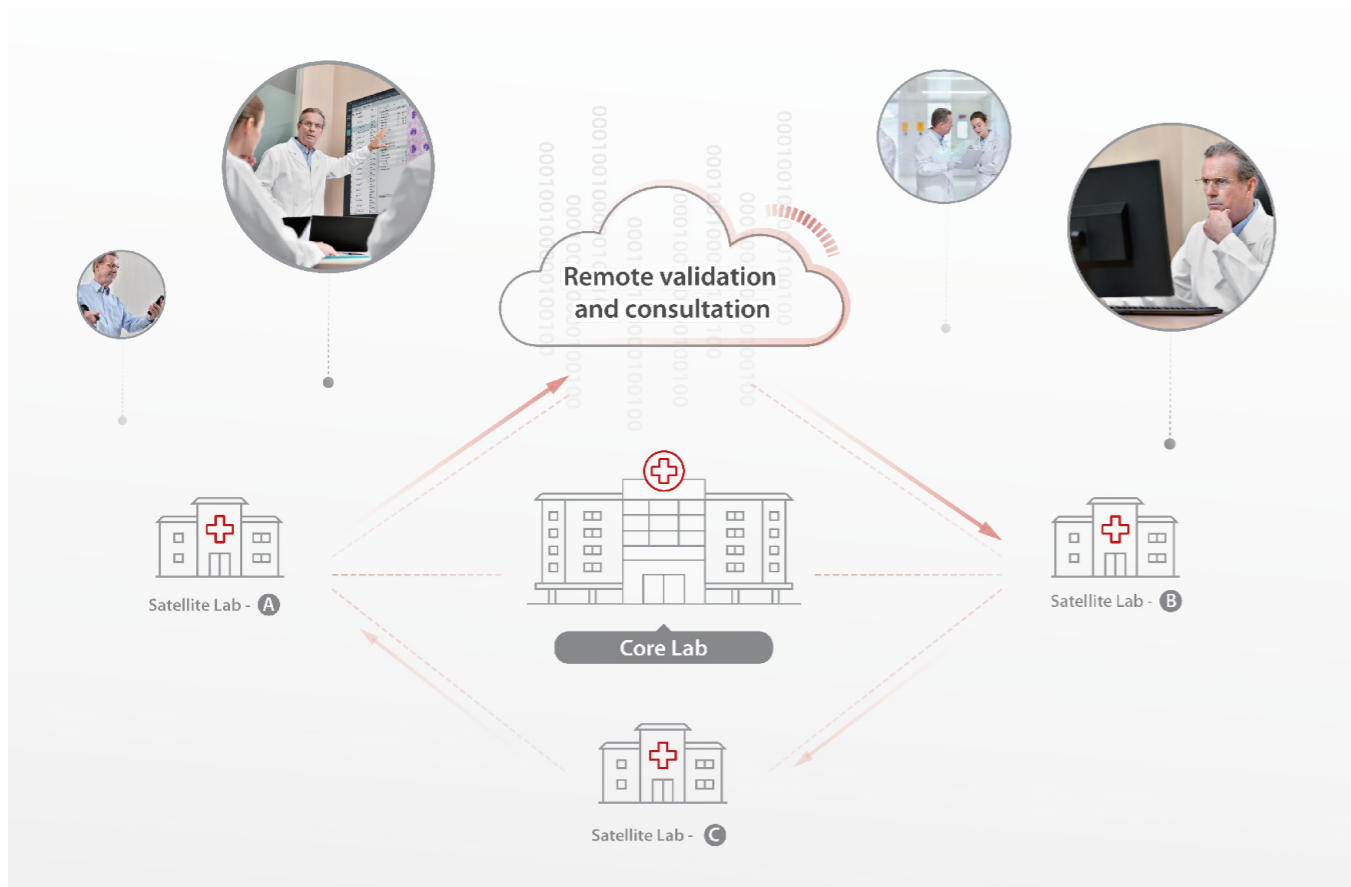
# More Productivity



**60 Slides/hour**  
Industry-leading high throughput

**SOLID ROCK** Hyper-stable anti-shake system: Aerospace materials and cutting-edge high-frequency exposure algorithm are integrated to eliminate blurred images.

## Remote review and consultation in multiple locations



Automatically receives prepared smears



Easily search and take slides with one click



User-friendly and intuitive workflow



High-end touch screen for intuitive interactions



STAT function for urgent cases

